



Mississippi Foundation Repair Specialists is proud to be the first to offer their clients commercial grade Ground Penetrating Radar (GPR) as an aid for proper foundation repairs and French drain systems. Mississippi Foundation Repair Specialists is pleased to work with TeaCo Geophysical LLC., a leader in GPR services available in the southern states. One purpose of GPR is to provide the most accurate water table depth determinations available. This is due to the fact that water is so electrically different from soils, rocks, and other materials normally encountered, it creates a significant change and velocity decrease for GPR energy. Many natural variables play into the fluctuating nature of the water table in this region, making GPR an excellent choice for determining the depth needed to establish the base of French drain systems. In addition, GPR is a non-invasive, green method of data acquisition; the nearest analogy being a MRI on the body. TeaCo Geophysical's GPR data provides MFRS with detailed subsurface information their engineers use to design a French drain before removal of earth begins.

Why should you choose Mississippi Foundation Repair Specialist?

MFRS is the only service company in Mississippi to offer Ground Penetrating Radar (GPR) to its customers. At the request of MFRS, TeaCo Geophysical will send a technician to your home to conduct a GPR survey. Data collected from this survey will be supplied to MFRS after processing and interpretation. Observations made by MFRS engineers combined with the analysis of GPR data provide customers with a reasonable conclusion as to the nature of the foundation problem. The GPR data supplied to MFRS allows their engineers and associated professionals the ability to make highly accurate decisions in the planning stages of French drain systems, an ideal method to remove subsurface fluids from effected structures.

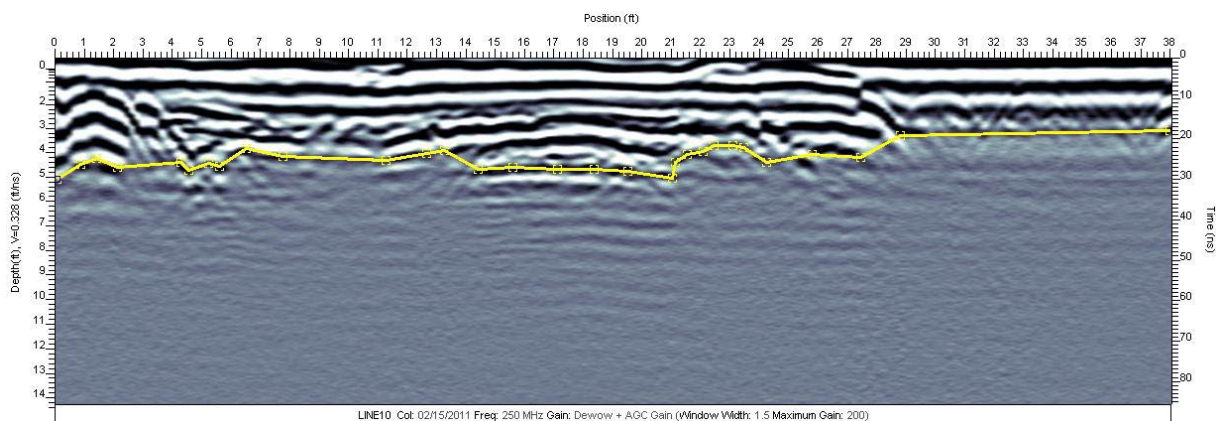


Fig 1: In this image the yellow line denotes the point where the water table existed at the time of this survey, prior to the professionally installed French drain system provided by MS Foundation Repair Specialists. The image displays a high amount of fluctuation along the data acquisition line and TeaCo attributes this interpretation in part to inconsistencies in compaction, and contact with indigenous materials. As an added benefit the depth of fill materials is also determinable on most locations.



What subsurface information can be derived from a GPR survey and how can it assist in the design phase of foundation repair prior to excavation and construction?

- A highly accurate survey of water table depth
- Indicates differences in soil content (select fill vs. high clay content vs. sands)
- Can assist in the detection of water, sewer, septic, electric, cable, and sprinkler lines (MS One Call is used to locate primary utilities)
- Identifies areas of water saturation due to leaking pipes, gutter down spouts, or natural piping

Mississippi Foundation Repair Specialist uses the GPR survey to implement installation of French drain systems while minimizing disruption of customer's property. While every effort will be made to prevent damage to customer's plants, landscaping, and secondary utilities such as low voltage lighting and sprinklers, neither MFRS nor TeaCo Geophysical will accept any responsibility for damages that may occur during excavation. TeaCo Geophysical works to provide MFRS the added value of this technology in the remediation efforts, as it will ultimately save the property owner money in the long run. TeaCo provides technical evaluations to MFRS that ensures their clients receive professional drainage services tailored exactly to their needs. We look forward to putting our combined skill and knowledge to work for you.